

IEC appliance inlet C6, screw-on mounting, front side, solder terminal



Screw-On Version



**Description**

- Panel Mount:  
Screw-on from front or rear-side
- Appliance inlet, Pin temperature 70 °C, Protection class I
- Solder terminals for wires or PCB

**Approvals**

- VDE License Number: 40017309
- UL License Number: E96454
- CSA License Number: 73165

**Weblinks**

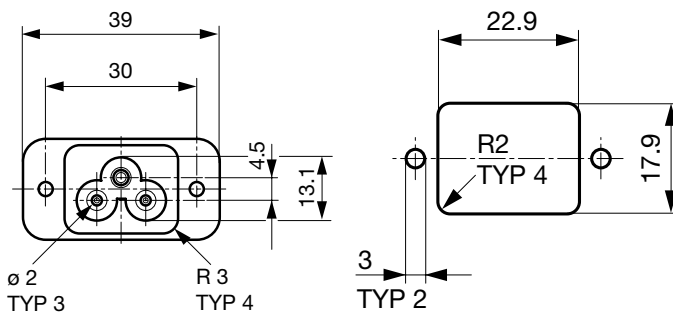
Approvals, RoHS, CHINA-RoHS, e-Store, SCHURTER-Stock-Check, Distributor-Stock-Check

**Technical Data**

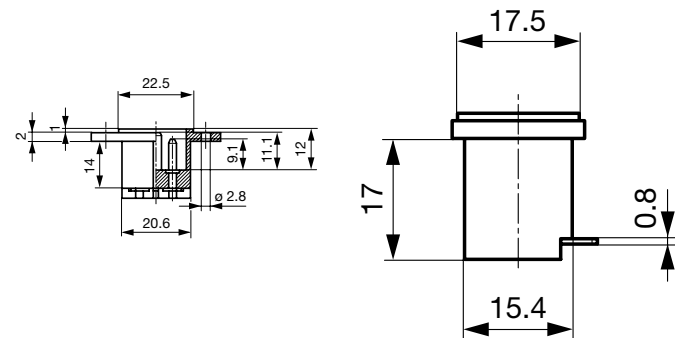
Ratings IEC	2.5 A / 250 VAC; 50 Hz
Ratings UL/CSA	2.5 A / 250 VAC; 60 Hz
Dielectric Strength	> 2 kVAC between L-N > 2 kVAC between L/N-PE (1 min/50 Hz)
Allowable Operation Temp.	-25 °C to 70 °C
Degree of Protection	from front side IP 40 acc. to IEC 60529
Protection Class	Suitable for appliances with protection class I acc. to IEC 61140
Terminal	Solder terminals for wires or PCB
Panel Thickness s	Screw-on: max 4 mm Mounting screw torque max 0.5 Nm
Material: Housing	Thermoplastic, black, UL 94V-0

Appliance-Inlet/-Outlet	C6 acc. to IEC/EN 60320-1, UL 498, CSA C22.2 no. 42 (for cold conditions) pin-temperature 70 °C, 2.5A, Protection class I
-------------------------	---

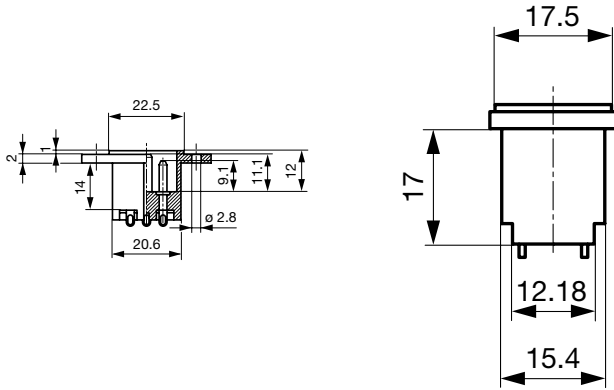
**Dimensions**



Solder terminals for PCB

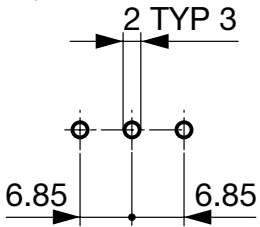


Solder terminals for wires



### Drilling diagrams

PCB Layout



### Variants

[Distributor-Stock-Check](#) | [SCHURTER-Stock-Check](#) | [e-Store](#)

Type	Panel mounting	Panel Thickness s [mm]	Terminal	Order Number
0724	Screw-on	4	PCB	4300.0101
0724	Screw-on	4	Solder terminals	4300.0100

**Packaging unit** 100 Pcs